



# RUGBY VISITOR GUIDE

FIND YOURSELF HERE







# Welcome to The Rugby Town

**Our market town holds the unique distinction as being the birthplace of rugby football. The sport played and enjoyed by millions across the world all started here, in the heart of England.**

For sporting enthusiasts, a visit to Rugby is something of a pilgrimage. They come to see where the game first started back in 1823, discovering the people and events which shaped the origins of the sport and to get up, close and personal with the places, the streets and buildings that ooze history.

Yet, there is so much more to Rugby than our connections to the game.

The town's history stretches back to Roman times, the Domesday Book and has links to the Gunpowder Plot. We are proud of our literary heritage, our innovations in engineering and the work of pioneers who helped shape the modern world.

The Rugby Town Visitor Guide is full of ideas to help you plan your visit to Rugby. From our visitor attractions, gardens, countryside and canals, to events, arts and culture, food and drink, themed trails, shopping and accommodation, this guide will give you an insight into what we have to offer.

Whether you are here for the day, or planning a short stay, there is plenty to see and to enjoy in our famous town and Borough.

For help and information ahead of your trip, please contact

**Rugby Visitor Centre**

Little Elborow St., Rugby, CV21 3BZ

Telephone.: 01788 533217

E-mail: [visitor.centre@rugby.gov.uk](mailto:visitor.centre@rugby.gov.uk)

# The Birthplace of Rugby Football

**When you visit The Rugby Town, you will find it is fascinating and inspiring to know that the worldwide sport of rugby football took its name from our market town.**

Prepare to find yourself delving into the origins of the sport, to see where and how it all started, the history of the characters that shaped the game we know today, and the profound uniqueness of the town's connections.

The game of rugby which is now played and appreciated by millions all began at Rugby School back in 1823. It was here during a football match on The Close that one of its pupils, William Webb Ellis, broke with tradition





and 'with a fine disregard for the rules' picked up the ball and ran with it, in doing so creating the game of rugby football.

To get even closer to this fascinating history and olde world charm, take a tour of Rugby School with one of their knowledgeable tour guides. It is a 90-minute experience not to be missed, with opportunity to view its impressive historic buildings and museum. A glimpse of The Close and the hallowed turf where the game first started against the distinctive backdrop of the School and its Chapel is a particular highlight and photo opportunity. Group tours are available when booked by prior arrangement and can be tailor-made for specific groups. Charges apply.

### Rugby School Tours

Rugby School Shop  
 Barby Road, Rugby, CV22 5EH  
 Telephone: 01788 556169  
 Email: [bookshop@rugbyschool.net](mailto:bookshop@rugbyschool.net)  
 Website: <https://web.rugbyschool.co.uk/commercial/school-shop-and-tours/tours>

A short walk from The Close is an elegant statue of William Webb Ellis. Standing proudly in the shadow of Rugby School, it was commissioned after a worldwide appeal and is a fitting tribute to Rugby's most famous pupil.

Situated opposite the statue, you will find the Webb Ellis Rugby Football Museum. This is the original building where boot and shoemakers William and then James Gilbert moved premises to from the town's High Street in 1842, to expand their rugby football manufacturing business. As a result, the museum has the distinction of having the longest continuous association with the game of rugby in the world.

Visitors to the museum can find out about the traditional manufacture of the rugby ball from its origin as a pig's bladder to its highly advanced and technical production of today, which serves rugby nations and clubs worldwide. The Museum is also home to a vast collection of artefacts and memorabilia including the original Webb Ellis Cup, Charter Day Balls, 1851 Leather Stands. There is also a dedicated section to the Barbarians FC which contains shirts, programmes, balls and ties, paying homage to the world's most famous rugby clubs. Entrance is free.

### Webb Ellis Rugby Football Museum

5-6 St Matthews Street, Rugby, CV22 3BY  
 Telephone: 01788 567777  
 Website: [www.webbellisrugby.co.uk/history](http://www.webbellisrugby.co.uk/history)



# History and Heritage

A visit to The Rugby Town will provide you with opportunity to discover a place with a rich history, where other pioneering spirits have created scientific and literary legacies.

Mention of Rugby's existence dates all the way back to 1086 in the **Domesday Book**, when it was noted as a small Anglo-Saxon settlement, before it was granted a market charter in 1255. Before then, the Romans also had an influence on the area by building two major Roman roads, the Fosse Way and Watling Street, very close to the town, whilst remains of the Roman settlement called **Tripontium** have also been discovered on the edge of the Borough.

Rugby also has historic connections to the **Gunpowder Plot** of 1605, with the villages of Ashby St. Ledgers and Dunchurch playing a part in the failed assassination attempt against King James I.

The development of Rugby as a market town owes much to events of the 18th and 19th century. First, there was the construction and opening of the North Oxford Canal, which weaves its way through the bottom edge of Rugby and out into the surrounding countryside. Then came the arrival of the railways to the town in the early 1800s, which played a significant part in transforming Rugby into a major industrial centre.

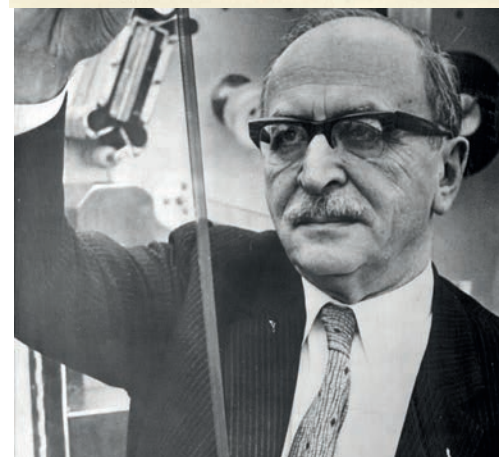
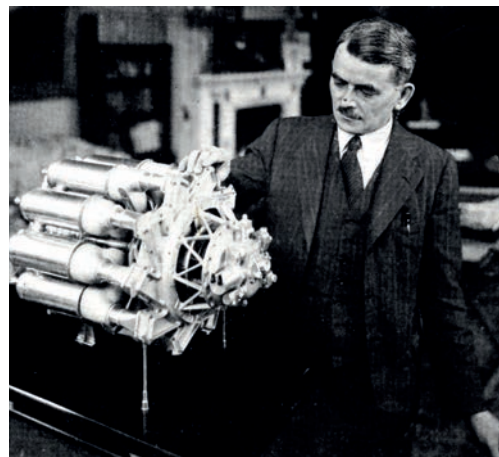
Rugby's influence on the world stretches into the fields of science, the jet engine, literature, even the Olympics! **Sir Joseph Norman Lockyer**, born in Rugby in 1836, was a keen amateur astronomer with a particular interest in the sun. Together with French scientist Pierre Janssen, they are credited with the discovery of helium gas. After fleeing Nazi Germany in the 1930s, the Hungarian-born scientist **Dennis Gabor** settled in Rugby and made history in 1947 when he invented holography, the technique which produces holograms.

**Sir Frank Whittle**, 'the father of the jet engine', made crucial breakthroughs in the engine's development while working in Rugby. He ran the first successful test of his turbo-jet engine in 1937 before basing his design team at Brownsver Hall, which is now a hotel.

Alongside those pioneering contributions to science and engineering, Rugby has also enriched the literary world. The town was the birthplace of **Rupert Brooke**, the famous First World War poet whose sonnets captured the idealism of the early years of the Great War. Brooke's famous collection of work – 1914 and Other Poems – was published in May 1915, just weeks after the 27-year-old died from sepsis while serving with the Royal Navy.

The novel **Tom Brown's School Days** was inspired by author Thomas Hughes's time at Rugby School, where he studied from 1834 to 1842. The book inspired the tradition of classic school novels and charts life at Rugby School under the guidance of legendary headmaster, **Dr Thomas Arnold**. Such was Arnold's legacy that he also inspired the French educationalist **Baron Pierre de Coubertin** to establish the modern Olympic Games in Athens in 1896.

Rugby School also has links with another literary classic, *Alice in Wonderland*. A young Charles L. Dodgson spent three years studying at the school before finding worldwide fame under his pen name, **Lewis Carroll**. Other great literary figures who have also attended Rugby School include Arthur Ransome, Anthony Horowitz and Salman Rushdie.







# Rugby Art Gallery and Museum

**Rugby Art Gallery & Museum is a modern and dynamic experience where visitors can explore some of the town's strong cultural heritage and the area's bright artistic future. It should be the starting point for any visit to Rugby, with the town's Visitor Centre open to all on the ground floor.**

Visitors can experience exciting exhibitions of contemporary and modern art, as well as displays that tell the story of Rugby's past, from Roman times to present day. The Floor One Gallery showcases the talents of local artists and craftspeople and is a good place to pick up a unique gift or artwork, as works are often available to buy.

On permanent display in the Archaeology Gallery is the Tripontium collection - a showcase for the artefacts from the Roman town of Tripontium. The gallery, in the style of a Roman market place, is an interactive space where children can have fun as they learn about Roman life.

Admission is free, and there is always something fun to see and do for the whole family. To find out more, please contact Rugby Art Gallery and Museum using the details below.

## **Rugby Art Gallery and Museum**

Little Elborow Street, Rugby, CV21 3BZ

Telephone: 01788 533201

Email: ragm@rugby.gov.uk

Website: www.ragm.co.uk





Credit: Veronika Beckova



## Town Centre Attractions

Rugby town centre has a variety of other great attractions to visit, including museums and theatres, beautiful parks and open spaces.

### Local sites and green spaces

#### St. Andrew's Church

Church Street, Rugby, CV21 3PT  
Telephone: 01788 565609  
Email: [office@rugbychurch.org.uk](mailto:office@rugbychurch.org.uk)  
Website: [www.standrewrugby.org.uk](http://www.standrewrugby.org.uk)

An iconic, Grade II listed building in the heart of Rugby, famous for being the only parish church in the world with peals of bells in two towers. The award-winning eco church also boasts a popular café and a variety of community events.

#### Caldecott Park

Park Road, Rugby, CV21 2DT  
Website: [www.rugby.gov.uk/CaldecottPark](http://www.rugby.gov.uk/CaldecottPark)

The award-winning Caldecott Park is a beautiful spot to escape to and only a short walk from the town centre. Opened in 1904, this popular park has colourful flower beds and has regularly featured in the Britain in Bloom competition, being awarded the prestigious Green Flag Award 15 times in a row. Caldecott Park also has a children's adventure playground, tennis courts, a café and a historic band stand.

#### Jubilee Gardens

Regent Place, Rugby, CV21 2PN

The Jubilee Gardens were opened in 1977 to mark the Silver Jubilee of Queen Elizabeth II on the site of the former Town Baths. In the gardens stands a statue of Rupert Brooke, unveiled to commemorate the poet's centenary in 1987.

### Whitehall Recreation Ground

Bruce Williams Way, Rugby, CV22 5LJ

Located five minutes from the town centre, this historic recreation ground is amongst one of the oldest recreation grounds in the country. Now a designated Queen Elizabeth II Field, these 12 acres make for a pleasant walk and are home to the town's War Memorial Gates and feature a children's play park and skate park.

## Entertainment

### The BENN Hall

Newbold Road, Rugby, CV21 2LN

Telephone: 01788 533719

Email: [bennhall@rugby.gov.uk](mailto:bennhall@rugby.gov.uk)

Website: [www.bennhall.com](http://www.bennhall.com)

The BENN Hall is Rugby's premier entertainment venue, with a busy programme of live music, comedy and theatre. Having been opened in 1961 by the late Queen Elizabeth, The Queen Mother, it plays host to a wealth of famous faces and entertains thousands of guests each year.

### Rugby Theatre

Henry Street, Rugby, CV21 2QA

Telephone: 01788 541234

Email: [info@rugbytheatre.co.uk](mailto:info@rugbytheatre.co.uk)

Website: [www.rugbytheatre.co.uk](http://www.rugbytheatre.co.uk)

Renowned as one of the top amateur theatres in the country, this intimate 270 seat theatre puts on a wide range of live performances throughout the year, ranging from classical drama to modern plays, from farce to big budget musicals. Feature films are also shown on screen.

### Macready Theatre

Lawrence Sheriff Street, Rugby, CV21 5EJ

Telephone: 01788 556281

Website: [www.macreadytheatre.co.uk](http://www.macreadytheatre.co.uk)

After a relaunch in recent years, Rugby School's historic Macready Theatre hosts a programme of touring theatre, stand-up comedy, dance, music and spoken word performances.

### Cineworld

Junction One Retail Park, Leicester Road,

Rugby, CV21 1RW

Telephone: 0871 200 2000

Website: [www.cineworld.co.uk/cinemas/rugby/049](http://www.cineworld.co.uk/cinemas/rugby/049)

A nine-screen multiplex cinema with over 1600 seats and a deluxe screen, showing latest film releases. Onsite refreshments, hearing loop and free parking are also available. Fully accessible.

### Queen's Diamond Jubilee Leisure Centre

Queen's Diamond Jubilee Centre

Bruce Williams Way, Rugby, CV22 5LJ

Telephone: 01788 565369

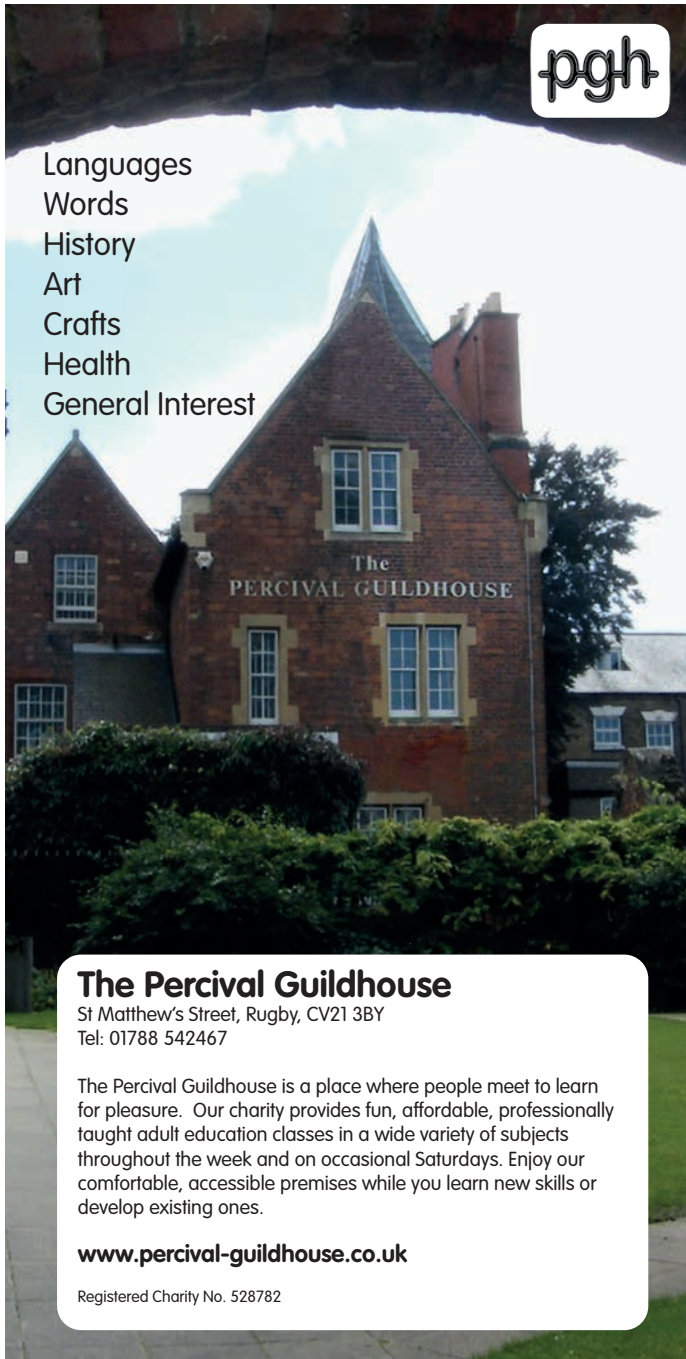
Website: [www.better.org.uk/leisure/the-queens-diamond-jubilee-centre](http://www.better.org.uk/leisure/the-queens-diamond-jubilee-centre)

Rugby's state-of-the-art sport centre facility includes a 25 metre eight-lane swimming pool; a large 100 station gym, six court sports hall, and a climbing wall. The Centre also has a coffee shop, open to non-centre users.





Languages  
Words  
History  
Art  
Crafts  
Health  
General Interest



### The Percival Guildhouse

St Matthew's Street, Rugby, CV21 3BY  
Tel: 01788 542467

The Percival Guildhouse is a place where people meet to learn for pleasure. Our charity provides fun, affordable, professionally taught adult education classes in a wide variety of subjects throughout the week and on occasional Saturdays. Enjoy our comfortable, accessible premises while you learn new skills or develop existing ones.

[www.percival-guildhouse.co.uk](http://www.percival-guildhouse.co.uk)

Registered Charity No. 528782





## Walking trails and tours

To gain a real sense and appreciation of our unique contributions and connections to rugby, science, engineering and literature, why not explore a series of walking trails and tours around The Rugby Town.

### Rugby Pathway of Fame

A wonderful exploration of the town, combining the heritage of rugby football with places of interest in and around the birthplace of the game. This unique tour was first installed for the Rugby World Cup in 1999 and has subsequently had more plaques added over the years.

Starting at Rugby Visitor Centre, the Pathway of Fame takes the form of over 50 numbered metal plaques set into the pavement at intervals around the town centre. The plaques celebrate the history of the game and commemorates some of rugby's most notable players and events.

### Blue Plaques Trail

This tour of over 30 plaques takes visitors to famous buildings and notable sights in and around Rugby town centre. They include the place of Gilbert's original workshop, the original Town Hall, the town's medieval moat and the first site of Rugby's girls' High School.

Rugby's Blue Plaques also pay homage to some of Rugby's famous personalities and characters. They include Lawrence Sheriff, the Elizabethan gentleman and grocer to Elizabeth I; antiquary and amateur archaeologist Matthew Bloxam, physicist and Nobel Prize winner Dennis Gabor, the curiously named 'Woodbine Willie', and boxer Jonny Williams. Events such as the Centenary of Caldecott Park, Queen Victoria's Jubilee and the last reading of the Riot Act are also featured.

### Public Art Trail

A fascinating combination of murals, sculptures, statues and carvings set in various locations around the town centre and surrounding areas. This trail gives a history of artwork, the artists involved and the idea behind each piece, and encourages individuals to discover their own creative surroundings.

The statues of William Webb Ellis and Rupert Brooke form part of the trail, along with a collection of unique rugby ball sculptures which are displayed in various locations around the town and come with their unique take on the sport and the birthplace of the game.

### Guided Walking Tours with the Rugby Town Guides

Our volunteer Town Guides will take you on a journey of discovery through the town centre, revealing fascinating facts about the history of Rugby. Tours are free and run regularly in the spring and summer. Our friendly Guides will also endeavour to run bespoke tours, subject to availability. Details are available from Rugby Visitor Centre.

**Copies of the trails are available from Rugby Visitor Centre, or online at [www.therugbytown.co.uk](http://www.therugbytown.co.uk)**

**For further information and to find out about the guided Town Tours, please contact the Visitor Centre team on 01788 533217, or e-mail [visitorcentre@rugby.gov.uk](mailto:visitorcentre@rugby.gov.uk).**

## In and Around Rugby Borough

The impressive range of visitor attractions that Rugby has to offer extends beyond the town centre.

### Country Parks

#### Draycote Water Country Park

Kites Hardwick, Rugby, CV23 8AB  
Telephone: 01788 811107  
Email: draycotewater@severntrent.co.uk  
Website: www.visitdraycote.co.uk

A popular country park near Rugby, Draycote Water offers leisurely walks, water sports, fishing, nature trails and bird hides.

A five-mile road surrounding the reservoir is ideal for a stroll, run or cycle. Follow the footpath down to the 21-acre country park, where you will find a play area with picnic tables. The site also has a fully accessible Visitor Centre, café and shop.

#### Coombe Country Park

Brinklow Road, Rugby, CV3 2AB  
Telephone: 02476 453720  
Website: www.coventry.gov.uk/coombe

A delightful country park covering 500 acres of beautiful historic Capability Brown designed parkland, garden, woodland and lakeside walks, and home to one of Warwickshire's

largest heronries. Visitors will also find other facilities including children's play areas, the Discovery Centre and cafés.

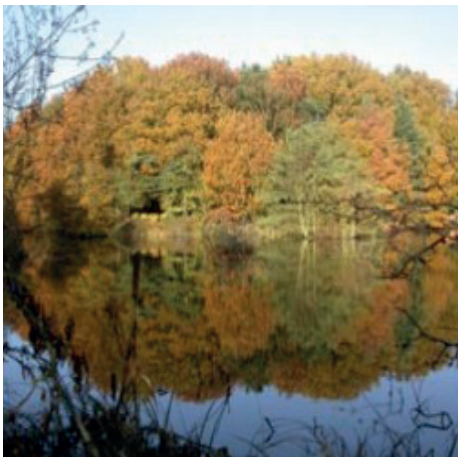
#### Ryton Pools Country Park

Ryton Road, Bubbenhall, CV8 3BH  
Telephone: 02476 305592  
Email: parks@warwickshire.gov.uk  
Website: www.countryparks.warwickshire.gov.uk

This 100-acre country park is home to a wide range of birds and other wildlife. Surfaced paths enable easy walking and provide access to an adjoining ancient woodland, Ryton Wood. Children will love the sensory trail and play areas, plus a miniature railway operating on Sundays from April to September. A Visitor Centre, gift shop and café are also available.

#### Brandon Marsh Nature Reserve

c/o Warwickshire Wildlife Trust  
Brandon Lane, Rugby, CV3 3GW  
Telephone: 02476 308999  
Email: enquiries@wkwf.org.uk  
Website: www.warwickshirewildlifetrust.org.uk/reserves/brandon-marsh  
Opened by Sir David Attenborough in 1998,



Brandon Marsh is a 200-acre nature reserve and Site of Special Scientific Interest (SSSI) on the banks of the River Avon. The Centre contains a visitor centre, gift shop and tearoom, displays, hands-on activities, an Education Centre and a Sensory Garden.

## Walks

In and around Rugby Borough you will find a number of locations, managed by the Warwickshire Wildlife Trust, perfect for walking. For all enquiries, visit the websites listed or email [enquiries@wkwf.org.uk](mailto:enquiries@wkwf.org.uk). Alternatively, call into the Rugby Visitor Centre for details of all walks available in and around the town centre and Borough, and local walks books for sale.

### Great Central Walk

Newton village and Rugby  
Newton access: CV23 ODZ  
Ashlawn Road access: Ashlawn Road, Rugby, CV22 5JX  
Website: <https://www.warwickshirewildlifetrust.org.uk/AshlawnCutting>

Now a nature reserve, the Great Central Walk is an enjoyable 5-mile pathway which follows the route of the old Great Central Railway line through Rugby. Ramped access onto the pathway can be found at many of the old bridges.

The northern section route runs from Newton Picnic Site to the Oxford Canal at Brownsover, where it stops. The southern section runs from Hunter Street, past the remains of the old Rugby Central station on Hillmorton Road, continuing onto Onley Lane.

The route can be used for walking or cycling, as well as observing a wide variety of wildlife.

### Newbold Quarry Park

Newbold-on-Avon, Rugby, CV21 1AY  
Website: [www.warwickshirewildlifetrust.org.uk/NewboldQuarry](http://www.warwickshirewildlifetrust.org.uk/NewboldQuarry)

This former cement quarry now attracts many water birds such as great crested grebe, swan, moorhen, and a range of ducks. A

variety of paths lead around this reserve, some accessible for wheelchairs and pushchairs.

### Swift Valley Nature Reserve

Old Brownsover Lane, Rugby, CV21 1HU  
Website: [www.warwickshirewildlifetrust.org.uk/SwiftValley](http://www.warwickshirewildlifetrust.org.uk/SwiftValley)  
Created in 2003, these 25 hectares of countryside, managed in partnership with the Warwickshire Wildlife Trust, have hard surfaced paths, informal grass paths, a canal towpath and cycle routes. The car park and access gates are all wheelchair and mobility scooter accessible.

### Cock Robin Wood

Dunchurch Road, Rugby, CV22 6PP  
Website: [www.warwickshirewildlifetrust.org.uk/reserves/CockRobinWood](http://www.warwickshirewildlifetrust.org.uk/reserves/CockRobinWood)

This wood has a network of surfaced and grassy paths set amongst the mixed woodland and shrubs, all based around a large pond which attracts a wild variety of wildlife and birds.

## Canals and Villages

### Hillmorton Locks and North Oxford Canal

Website: [www.canalrivertrust.org.uk/directory/3325-hillmorton-locks](http://www.canalrivertrust.org.uk/directory/3325-hillmorton-locks)  
[www.hillmortonlocks.co.uk](http://www.hillmortonlocks.co.uk)

Rugby has strong links to the UK's canal network, in particular to the North Oxford Canal, which meanders for seven miles through the Borough's surrounding countryside.

Hillmorton Locks are officially the busiest flight of locks in the country and a popular mooring spot for narrow boats. A licensed café and bistro for narrow boats. A licensed café and bistro are also available here.

### Village of Dunchurch

Three miles to the south of Rugby is Dunchurch, a pretty village steeped in history. On 5 November 1605, the conspirators of the Gunpowder Plot gathered at the Old Lion Inn, now a private house named Guy Fawkes' House, waiting to learn if their plan had been successful. Amid thatched cottages and the





beautiful parish church of St Peter's, in the village centre you will find the historic market cross and medieval stocks.

Draycote Water Reservoir and Country Park is only a five-minute drive from the village.

There are also numerous other beautiful villages in and around Rugby to explore, each with their own charm, character and history.

## Other places of interest

### Garden Organic

Ryton Gardens,  
Wolston Lane, nr Rugby, CV8 3LG  
Telephone: 02476 303517  
Email: enquiry@gardenorganic.org.uk  
Website: www.gardenorganic.org.uk

The UK's national centre for organic gardening with ten acres of beautiful gardens, a cafe and shop. Regular tours and events are held throughout the year, with talks, demonstrations and courses. Please enquire ahead of visiting.

### Marion Museum of Country Bygones

Louisa Ward Close, Marton,  
Near Rugby, CV23 9SA  
Telephone: 01926 632936  
Website: www.marionmuseum.co.uk

The Marion Museum of Country Bygones is a unique and comprehensive collection of country bygones, looking back on working life and other trades in the village and those nearby during the 19th and early 20th centuries. Open on Sundays from June through to September. Please enquire ahead of visiting.

### Rainsbrook Valley Railway

Onley Lane, Rugby, CV22 5QD  
Website: www.rugbymes.co.uk

The Rainsbrook Valley Railway lies on an 11 acres site on the edge of Rugby. Operated by the Rugby Model Engineering Society Ltd, the Railway opens to the public for a range of open days on the third Sunday of the month from April to October.

## Golf Courses

### Rugby Golf Club

Clifton Road, Rugby, CV21 3RD  
Telephone: 01788 542306  
Email: info@rugbygolfclub.co.uk  
Website: www.rugbygolfclub.co.uk

Dating back to its founding in 1891, this 18-hole course designed by James Braid borders the main London-Birmingham railway on one side and the Oxford Canal on the other, the standout feature being the beautiful viaduct overlooking the 13th tee. Visitors welcome by arrangement in advance.

### Whitefields Golf Club

London Road, Rugby, CV23 9LF  
Telephone: 01788 521800  
Email: mail@draycotehotel.co.uk  
Website: www.whitefieldsgolfclub.co.uk

This 18-hole course has the beautiful backdrop of Draycote Water, a 16-bay driving range, a practice chipping and bunker practice area and an 18-hole putting green, with the adjoining Draycote Hotel also on site. Visitors welcome.

### Leam Valley Golf Centre

Southam Road, Kites Hardwick,  
Near Rugby, CV23 8AA  
Telephone: 01788 522765  
Website: www.leamvalleygolfcentre.co.uk/

Driving range with 14 bays for all-weather practice. There is also a 9-hole par 3 and FootGolf Course.



# Shopping

The Rugby Town is an ideal place for a relaxed and enjoyable shopping experience.

With the town's historic Clock Tower at its heart, Rugby town centre prides itself as a clean and safe shopping environment. Home to a mix of national stores, independent retailers and well-established family-owned businesses, Rugby is certain to offer something for everyone and will produce some hidden gems.

## Rugby Central

19 Market Mall, Rugby, CV21 2JR

Telephone: 01788 572630

Email: [info@rugby-central.co.uk](mailto:info@rugby-central.co.uk)

Website: [www.rugby-central.co.uk/](http://www.rugby-central.co.uk/)

Rugby Central is the town's indoor shopping centre, open 7 days a week to enjoy some leisure time. With an award-winning car park, Rugby Central is easily accessed from the town centre.

## Independent Shopping

From quality fashion, bespoke gifts, wines and spirits to home décor and vinyl records, Rugby maintains its appeal for an individual shopping experience.

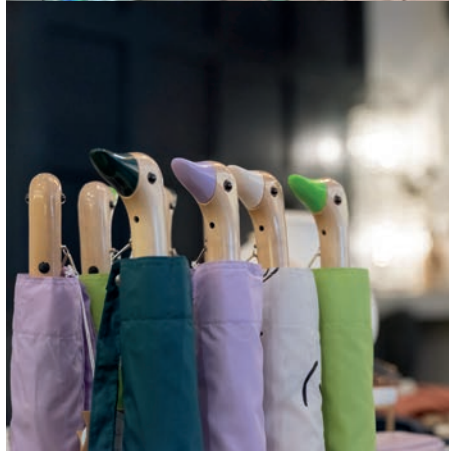
## Weekly Market

Fresh, local produce is on sale every Friday and Saturday in Market Place, Rugby. Rugby has an extensive history as a market town and has evolved over the years. In addition to a variety of fruit and vegetables, you will find clothing, fresh flowers, household goods and hot food on offer.

## Town Centre Car Parking

There are plenty of public car parks in Rugby town centre. A map can be found on the reverse of the guide. If you require more assistance, please contact Rugby Visitor Centre.

Shopping in Rugby extends to three out of town retail parks. Elliott's Field, Junction One and Technology Drive are closely located to each other offering a range of high street shops, food and drink outlets and ample parking.



## Food and drink

When it comes to looking for somewhere to eat and drink in Rugby, you will find you are spoilt for choice, with something to match everyone's taste, style and budget.

The town centre has an excellent selection of cafés, bars and restaurants to choose from and enjoy at any time of day, thanks to award-winning establishments sitting alongside a variety of well-known favourites.

If you are looking for a morning coffee, brunch, lunch, or afternoon snack, you will not need to look far. Cafes, tea and coffee shops, pubs, bars and eateries will cater for any size of appetite.

A wide range of cuisines are catered for in the town centre's many restaurants, which come alive at night. You will find a selection of venues with imaginative chefs serving British, Italian, Indian, Chinese, Thai, Mexican dishes and more, using locally sourced produce.

There is also a wonderful offer of pubs and bars with a friendly and vibrant atmosphere, offering an extensive choice of beers, wines, and spirits, many of which are produced locally. If you prefer a night of conversation over a glass of fizz or a cocktail, watching live sports or catching a local band, there is a place to suit your night out.

The options for food and drink also extend outside of Rugby town centre. A wealth of traditional country pubs and restaurants in many of the beautiful villages are dotted around the Borough.





## Events

The Rugby Town has an exciting calendar of events which will appeal to visitors of all ages and interests.

**Rugby Art Gallery and Museum** has a changing programme of free exhibitions throughout the year and a range of family friendly activities and workshops on offer, both in term and holiday time. Keep up to date on [www.ragm.co.uk](http://www.ragm.co.uk)

**Rugby Bikefest** is a firm favourite on the town's event calendar, attracting thousands of visitors each year. This free, family-friendly bike festival is organised in conjunction with local motorcycling groups, businesses and organisations, and is a great day out for all the family in Rugby town centre. Don't miss the spectacle of the 'ride-in', as the bikes make their way into the town centre.

The Rugby Town also plays an active part in the nationwide **Heritage Open Days** programme held every September. Many of the town and Borough's historic venues open their doors to offer guided tours and capture a behind-the-scenes look at our local history and heritage.

As the year draws to a close, the excitement gets underway with the **Christmas Lights Switch-On**, when a host of fairground rides, festive market stalls and twinkling lights are coupled with a day of entertainment to get everyone in the festive spirit.

For more details on these and other events held across the year in The Rugby Town, head to our 'What's On' section at [www.therugbytown.co.uk](http://www.therugbytown.co.uk)

# Rugby Visitor Centre

Rugby Visitor Centre has all the information and expertise to make your visit to The Rugby Town one to remember.

The Visitor Centre can be found in the heart of town, within the foyer of Rugby Art Gallery, Museum and Library. Our friendly and knowledgeable team can provide information on what to see and do and help you plan your visit.

The Visitor Centre Team can also assist with:

- Information and tickets for a variety of local events and activities
- Brochures on local and regional attractions
- Public transport information
- Guided Walking Tours

We welcome visits by groups and coach parties from the UK and overseas. For further details, please get in touch.

A visit to The Rugby Town would not be complete without a reminder. We have a well-stocked shop with a wide range of unique gifts ideas, books and souvenirs associated with The Rugby Town, the game of rugby and the Art Gallery & Museum.

## Rugby Visitor Centre,

Little Elborow Street,  
Rugby,  
CV21 3BZ  
Telephone: 01788 533217  
Email: [visitor.centre@rugby.gov.uk](mailto:visitor.centre@rugby.gov.uk)



## The Rugby Town Takeaway cup

The Rugby Town Takeaway cup is the perfect way to enjoy a hot drink on the go without filling the landfill! Made from rice husk, 100% biodegradable, dishwasher and microwave safe. Available from the Visitor Centre Shop.

Present your cup at selected cafés in town to access discounts on your takeaway drinks.

**Find out more on**  
[www.therugbytown.co.uk/ecocup](http://www.therugbytown.co.uk/ecocup)

## How To Get Here

Rugby's central location at the heart of the motorway and railway network makes it easy to reach from all parts of the UK.

### By Road

Rugby is easily accessible from junctions 18, 19 and 20 of the M1 motorway and from junction 1 of the M6 motorway.

### By Train

Rugby has excellent, regular rail links to nearby Coventry, Northampton and Birmingham. London Euston is less

than an hour away. From Rugby train station, the town centre is a short 15 minutes' walk.

For information on train times, please visit [www.nationalrail.co.uk](http://www.nationalrail.co.uk).

### By Air

Rugby is within easy travelling distance of Birmingham International (direct rail link to Rugby Train Station), East Midlands and London Luton airports.

# Discover Warwickshire

Our central and accessible location in the heart of England means that there are so many other places nearby to explore as part of your visit and stay in The Rugby Town.

Why not use Rugby as a tour base to explore what other parts of Warwickshire and central England have to offer?

Shakespeare's England to the west of Rugby covers South Warwickshire and the surrounding towns and villages. **Stratford-upon-Avon**, the birthplace of playwright William Shakespeare, is a world-famous destination and regional hotspot popular with UK and overseas tourists.

The historic market towns of **Warwick** and **Kenilworth** are both famed for their majestic castles. Founded by William the Conqueror, Warwick Castle offers visitors the chance to experience more than 1,100 years of history set within 64 acres of glorious grounds and gardens. Kenilworth Castle was also once a medieval fortress before later becoming an Elizabethan palace. **Royal Leamington Spa**, with its Spa heritage, is a fine example of elegant Regency architecture and boasts elegant parks, shopping, street cafés and independent boutiques.

North Warwickshire is an equally fascinating part of the region to explore. Explore **Nuneaton**, famous as the birthplace of the Victorian novelist George Eliot and for its 13th century market, and **Atherstone**, with a long history dating back to the Romans and the great warrior Queen Boudica.

The historic cathedral city of **Coventry** is a 20 minute drive from Rugby; **Birmingham**, including the NEC and Resorts World Arena, is less than an hour away. Both cities can be reached direct by train with regular services from Rugby Station.



# COOMBE ABBEY

*No ordinary hotel*



# Create everlasting memories

## Discover Coombe Abbey



Visit our historic four-star hotel and enjoy a stay surrounded by character and comfort. Each of our bedchambers are unique, not only because of their history and personality, but also due to their soft furnishings and beautiful views.

## Explore our events calendar



**Medieval Banquets**  
Monthly availability



**Murder Mystery**  
Monthly availability

**Book now at [coombeabbey.com/shop/](https://coombeabbey.com/shop/)**

→ **Follow us for a chance to win our 10k followers giveaway**



# A day out at Coombe Abbey

Now open at Coombe Abbey Visitor Centre



Instagram icon @flowersatcoombe



Instagram icon @the\_sundae\_club



Instagram icon @abbey\_artisan\_market



Facebook icon Café In The Park - Coombe Abbey



Grab life by the ropes with Go Ape at Coombe Abbey

To book visit [goape.co.uk/locations/coventry](http://goape.co.uk/locations/coventry)

## Where to stay



**Brownsover Hall Hotel**  
01788 546100  
[www.brownsoverhall.co.uk](http://www.brownsoverhall.co.uk)

Brownsover Hall Hotel is a fabulous Grade II listed Victorian Gothic Mansion nestling in seven acres of woodland and gardens.



**The Grosvenor Hotel**  
01788 535686  
[www.grosvenorhotelrugby.co.uk](http://www.grosvenorhotelrugby.co.uk)

Close to the town centre, this hotel has a modern classic charm. Each bedroom is decorated to a high standard, providing all the modern amenities desired. Comfort and mod cons are combined to meet top standards.



**The Dun Cow**  
0845 1551551  
[www.vintageinn.co.uk/theduncowdunchurch](http://www.vintageinn.co.uk/theduncowdunchurch)

If you are looking for some country village charm, this attractive lodge has it by the bucket-load. Offering some of the most welcoming accommodation in Warwickshire, it's a beautiful place to sit back and relax.



**The Carlton Hotel**  
01788 560211  
[www.thecarltonrugby.co.uk](http://www.thecarltonrugby.co.uk)

A family owned and run hotel providing affordable food and accommodation near to Rugby town centre and railway station.



**Diamond House Hotel**  
01788 572701  
[www.diamondhousehotel.co.uk](http://www.diamondhousehotel.co.uk)

Diamond House is a privately run guesthouse offering the best in comfort and customer care. Conveniently situated on A428, just 3 minutes' walk from our Rugby town centre.



**Golden Lion Hotel**  
01788 833577  
[www.goldenlionhotel.org](http://www.goldenlionhotel.org)

The Golden Lion is a friendly, family run 20 bedroom hotel and 16th century inn. It is located in the village of Easenhall, just 4 miles from Rugby and 9 miles from Coventry.



**Coombe Abbey Hotel**  
02476 450450  
[www.coombeabbey.com](http://www.coombeabbey.com)

A unique country house hotel nestling within the UK's historical heartland of Warwickshire. Boasting 119 rooms, Coombe Abbey truly is a unique and stunning venue for weddings, conferences and special occasions.



**Draycote Hotel**  
01788 521800  
[www.draycotehotel.co.uk](http://www.draycotehotel.co.uk)

A modern, relaxed venue with onsite 18-hole golf course. The hotel enjoys a central location, easily accessible from all Midlands motorway networks yet surrounded by the picturesque Warwickshire countryside and beautiful Draycote Water.



**The Green Man**  
01788 810210  
[www.thegreenmandunchurch.co.uk](http://www.thegreenmandunchurch.co.uk)

Set in a former coaching inn dating back to the 18th century, this pub with guestrooms is 1.4 miles from the M45, and 4.1 miles from Rugby train station.





**Hillmorton Manor Hotel**  
**01788 570155**  
[www.hillmortonmanor.co.uk](http://www.hillmortonmanor.co.uk)

Situated on the outskirts of Rugby and set in the beautiful leafy surroundings of Hillmorton village, this 12 bedroom hotel provides guests with comfort at affordable prices.



**Ibis Hotel Rugby East**  
**01788 824331**  
[www.ibishotel.com](http://www.ibishotel.com)

Located just off junction 18 of the M1, with easy access to local attractions in Rugby and Coventry. With 24/7 reception, it is ideally placed for long distance travel stops.



**Meadowview Cottages**  
**01327 843235**  
[www.meadowviewcottages.co.uk](http://www.meadowviewcottages.co.uk)

Set in beautiful, peaceful countryside and offering safe, family friendly accommodation, Meadowview Cottages sit at the heart of this family farm and offer self-catering facilities for up to six people.



**Holiday Inn Rugby/Northampton**  
**01788 824820**  
[www.hirugbyhotel.co.uk](http://www.hirugbyhotel.co.uk)

A modern hotel set in its own extensive grounds. The Holiday Inn Rugby/Northampton is situated just 10 miles from Althorp. The hotel is 20 minutes from Rugby and 40 minutes from Warwick Castle, Drayton Manor Park, Twycross Zoo, Ricoh Arena and NEC.



**Lawford Hill Farm**  
**01788 542001**  
[www.lawfordhill.co.uk](http://www.lawfordhill.co.uk)

Georgian farmhouse and converted barns in a rural location, two miles from Rugby offering Bed & Breakfast and self-catering accommodation.



**Murcott Mill Farmhouse B&B**  
**01327 842236**  
[www.bedandbreakfastnorthamptonshire.co.uk](http://www.bedandbreakfastnorthamptonshire.co.uk)

An imposing Georgian Mill House set in glorious peaceful countryside.



**Marston House B&B**  
**01327 260297**  
[www.ivabestbandb.co.uk](http://www.ivabestbandb.co.uk)

Marston House is in a conservation village of great charm. Only two bedrooms for Bed & Breakfast which are large and light.



**The Olde Coach House**  
**01788 890349**  
[www.oldecoachhouse.co.uk](http://www.oldecoachhouse.co.uk)

Under 20 minutes from Rugby, The Olde Coach House is set in the beautiful village of Ashby St Ledgers which was mentioned in the Domesday Book 1086.



**Shepherd's Row B&B**  
**01788 510503**  
[www.shepherdsrow.co.uk](http://www.shepherdsrow.co.uk)

Shepherds Row is situated in the attractive Northamptonshire village of West Haddon on the A428.



**Premier Inn Rugby North (M6 J1)**  
01788 220304  
www.premierinn.com

A drop kick away from the M6, Premier Inn Rugby North (M6 Jct 1) puts you comfortably where you need to be, with free parking at the hotel, shops and local amenities nearby.



**Meadow Field Luxury Glamping**  
01788 832833  
www.meadowfieldglamping.co.uk

Switch off and unwind in our luxury safari tents located in their very own meadow on our 350 acre farm. Each safari tent is fully equipped with everything you would need to relax and leave behind the daily treadmill of life.



**Travelodge Rugby Dunchurch**  
0871 9846099  
www.travelodge.co.uk/hotels/172/Rugby-Dunchurch-hotel

Located just 20 miles from Birmingham airport and 5 miles from Rugby train station, Rugby Dunchurch Hotel is an excellent choice for visitors seeking accommodation with great travel links to a wide range of unique attractions.



**Premier Inn Rugby North (Newbold)**  
0871 5278950  
www.premierinn.com

Whether you are staying for business or leisure, we pride ourselves on making sure you have everything you need to make your stay a comfortable one.



**The Pytchley Inn**  
01788 510426  
www.thepytchley.co.uk

We are a Family run Inn offering accommodation in 18 ensuite rooms, with a popular restaurant which has earned a far-reaching reputation for excellent quality, home-cooked food.

**Travelodge Rugby Central**  
0871 9846449  
www.travelodge.co.uk/hotels/430/RugbyCentral-hotel

Ideal for visitors wanting accommodation with excellent travel links. Only two miles from the Webb Ellis Rugby Football Museum and Rugby Art Gallery & Museum.



**Clifton Cruisers**  
01788 543570  
www.cliftoncruisers.com

Based centrally near Rugby, our canal boats give you the freedom to cruise along some of England's finest waterways. All the boats are well-equipped and fitted to a high standard to ensure that you have a comfortable trip.



**Rye Hill Country Cottages**  
01604 770990  
www.ryehillcottages.co.uk

Established in 1990 these superbly equipped cottages are ideal for flexible short and longer stays to suit your requirements, be they business or pleasure.



**The White Lion Inn**  
01788 834650  
www.facebook.com/thewhitelioninn

The White Lion Inn is a warm and friendly traditional 17th century coaching inn. Situated on the Fosse Way in the picturesque village of Brinklow.



**Wolvey Caravan & Camping Park**  
01455 220493  
www.wolveycaravanpark.itgo.com

A quiet family site situated on the borders of Warwickshire and Leicestershire, ideally located to explore the many places of interest in the Midlands.

# Competition

## Win an overnight stay for 2 at Coombe Abbey Hotel

**Enter our competition to win an overnight stay for 2 and more at the Coombe Abbey Hotel**

The prize includes:

- Overnight stay at Coombe Abbey with Breakfast (off-peak)
- A coffee and crepe at The Sundae Club (on-site at Coombe Abbey)
- A bunch of flowers from Flowers at Coombe and 2 x miniature Coombe Abbey Gins to take away
- Dinner in the garden restaurant (on-site at Coombe Abbey)

**Enter online by going to [www.therugbytown.co.uk/prizedraw](http://www.therugbytown.co.uk/prizedraw)**  
Dates subject to availability and excludes peak times.  
Full terms and conditions, (including deadline to enter) on website.



# FIND YOURSELF HERE



- 1

  
The Benn Hall
- 2

  
Caldecott Park
- 3

  
Jubilee Gardens and  
Rupert Brooke Statue
- 4

  
Rugby Theatre
- 5

  
Marketplace  
& Rugby Central
- 6

  
St. Andrews Church
- 7

  
Art Gallery, Museum,  
Library & Information Centre
- 8

  
Webb Ellis Museum
- 9

  
Webb Ellis Statue
- 10

  
Rugby School
- 11

  
Macready Theatre
- 12

  
Queen's Diamond  
Jubilee Leisure Centre